



# BURNSIDE

## **Bujagali Energy Limited**

### **Bujagali Hydropower Project Social and Environmental Assessment Report Executive Summary**

*Prepared by*

---

R.J. Burnside International Limited  
292 Speedvale Avenue West, Unit 7 Guelph ON N1H 1C4 Canada

*In association with*

Dillon Consulting Limited, Canada  
Ecological Writings #1, Inc., Canada  
Enviro and Industrial Consult (U) Ltd., Uganda  
Frederic Giovannetti, Consultant, France  
Tonkin & Taylor International Ltd., New Zealand

December, 2006

File No: I-A 10045

The material in this report reflects best judgement in light of the information available at the time of preparation. Any use which a third party makes of this report, or any reliance on or decisions made based on it, are the responsibilities of such third parties. R.J. Burnside International Limited accepts no responsibility for damages, if any, suffered by any third party as a result of decisions made or actions based on this report.

**Bujagali Energy Limited**

Bujagali Hydropower Project  
Social and Environmental Assessment – Executive Summary  
December, 2006



---

Dr. Patrick Mwesigye  
Certified Environmental Practitioner  
Certificate No. CC / EIA / 034 / 06  
In Country SEA Team Leader  
Enviro and Industrial Consult (U) Ltd., Uganda



---

Mr. Robert Turland  
Certified Foreign Environmental Practitioner  
Certificate No. CC / F002 / 06  
SEA Project Manager  
Dillon Consulting Limited, Canada



---

Dr. Brett Ogilvie  
Certified Foreign Environmental Practitioner  
Certificate No. CC / F003 / 06  
SEA Specialist / Natural Resources Team Leader  
Tonkin & Taylor International Ltd., New Zealand



---

Mr. Frederic D. Giovannetti  
Certified Foreign Environmental Practitioner  
Certificate No. CC / F001 / 06  
Socio-Economic Team Leader and Resettlement Specialist  
Frederic Giovannetti, Consultant, France

## Table of Contents

<b>Glossary</b> .....	<b>iii</b>
<b>Foreword</b> .....	<b>v</b>
<b>1.0 Introduction</b> .....	<b>1</b>
1.1 Project Overview and History .....	1
1.2 SEA Process and Report.....	13
<b>2.0 Regulatory Requirements</b> .....	<b>15</b>
<b>3.0 Existing Social and Environmental Conditions</b> .....	<b>17</b>
3.1 Project Setting .....	17
3.2 Biophysical Conditions .....	17
3.3 Socio-economic and Cultural Conditions .....	19
3.4 Recent Activities in the Project Area.....	20
<b>4.0 Project Need and Alternatives</b> .....	<b>23</b>
4.1 Need and Rationale for the Project .....	23
4.2 Alternative Power Generation Technologies .....	23
4.3 Alternative Hydropower Development Sites .....	24
4.4 Evaluation of Alternative Hydropower Configurations .....	25
<b>5.0 Project Description</b> .....	<b>27</b>
<b>6.0 Public Consultation and Disclosure</b> .....	<b>29</b>
6.1 Consultation Program .....	29
6.2 Grievance Management Mechanisms .....	37
6.3 Disclosure Program.....	37
<b>7.0 Impact Identification and Management</b> .....	<b>39</b>
7.1 Compliance Screening .....	39
7.2 Project Benefits and Community Development .....	39
7.2.1 Project Benefits.....	39
7.2.2 Community Development Program .....	40
7.3 Key Project Issues and Net Effects Analysis.....	41
7.4 Cumulative Effects .....	46
<b>8.0 Social and Environmental Action Plan</b> .....	<b>49</b>
8.1 Environmental Management .....	49
8.2 Relationship of the SEAP to Other Project Plans .....	50
8.3 Implementation of the Social and Environmental Action Plan.....	50
8.3.1 BEL's Commitments and Resourcing .....	50
8.3.2 EPC Contractor's Commitments and Resourcing .....	50
8.3.3 Reporting Lines and Decision-Making.....	53
8.3.4 Social and Environmental Auditing and Reporting .....	53
8.3.5 Social and Environmental Oversight.....	53
8.3.6 Change Management .....	54
8.4 Responsibilities and Costs for Environmental Mitigation Measures .....	54
8.5 Responsibilities for Environmental Monitoring Measures .....	56
8.6 Institutional Strengthening.....	56

**Tables**

Table ES-1:	Consultation Activity Summary .....	29
Table ES-2:	Summary of Key Issues and Responses .....	30
Table ES-3:	Summary of Project Effects, and Impact Mitigation and Effects Monitoring Activities.....	42
Table ES-4:	Responsibilities, Timing and Budgets for Social and Environmental Actions.....	55

**Figures**

Figure ES-1	Location of the Bujagali Project.....	3
Figure ES-2	General Project Layout .....	5
Figure ES-3	Schematic of Bujagali Hydro Dam and Transmission Facilities.....	7
Figure ES-4	Permanent and Temporary Land Takes, 1 of 2 .....	9
Figure ES-4	Permanent and Temporary Land Takes, 2 of 2 .....	11
Figure ES-5	Public Consultation and Disclosure Activities .....	35
Figure ES-6	SEAP Component Plans.....	51

## Glossary

AESNP	AES Nile Power
AfDB	African Development Bank
AOIs	Area of Influence
APRAP	Assessment of Past Resettlement Action Plan
BEL	Bujagali Energy Limited
BIU	Bujagali Implementation Unit
CBOs	Community Based Organisations
CDAP	Community Development Action Plan
CFR	Central Forest Reserve
DEG	Deutsche Investitions und Entwicklungsgesellschaft mbH
DRC	Democratic Republic of Congo
EA	Environmental Assessment
EIB	European Investment Bank
EIA	Environmental Impact Assessment
EMMP	Environmental Mitigation and Monitoring Plan
EPC	Engineer, Procure, Construct
ES	Executive Summary
EU	European Union
FSL	Full Supply Level
GoU	Government of Uganda
HPP	Hydropower Project
IBRD	International Bank of Reconstruction and Development
ICSID	International Centre for Settlement of Investment Disputes).
IDA	International Development Association
IESA	Integrated Environmental and Social Assessment Guidelines
IFC	International Finance Corporation
ILO	International Labour Organisation
IP	Interconnection Project
IUCN	International Union for the Conservation of Nature
Km	Kilometres
kV	Kilovolts
LVBC	Lake Victoria Basic Commission
LVDP	Lake Victoria Development Programme
m AMSL	Metres Above Mean Sea Level
MDE	Maximum Design Earthquake
MFL	Maximum Flood Level
MIGA	Multilateral Investment Guarantee Agency
MoH	Ministry of Health
MOL	Minimum Operating Level Environmental Mitigation Plan
MRF	Minimum Residual Flow
MW	Megawatt
NBI	Nile Basin Initiative

NEMA	National Environment Management Authority
NGO	Non-Governmental Organisation
Nile COM	Council of Ministries
Nile SEC	Nile Secretariat
Nile TAC	Technical Advisory Committee
OED	Operations Evaluation Department
OPs	Operational Policies
PCDP	Public Consultation and Disclosure Plan
PPAH	Pollution Prevention and Abatement Handbook
SEA	Social and Environmental Assessment
SEAP	Social and Environmental Action Plan
SEO	Site Environmental Officer
SIA	Strategic Impact Assessment Guidelines
SSEA	Strategic/Sectoral, Social and Environmental Assessment
TASO	The Aids Support Organisation
TBD	To Be Decided
UETCL	Uganda Electricity and Transmission Company Limited
WBG	World Bank Group

## **Foreword**

The Bujagali Hydropower Project is a proposed 250 MW hydropower facility on the Victoria Nile in the Republic of Uganda. The project sponsor is Bujagali Energy Limited.

The Project is closely associated with the Uganda Electricity Transmission Company Ltd.'s Bujagali Interconnect Project, which is a proposed interconnection system from the Bujagali Hydropower Project to the national electrical grid.

This is the Executive Summary of the Social and Environmental Assessment for the Bujagali Hydropower Project that is being disclosed by Bujagali energy Limited for stakeholder review and comment. This document provides a non-technical synopsis of the environmental and social assessment documentation for the project.

Readers are advised to consult the Social and Environmental Assessment for detailed technical information, including references and sources, supporting the summary conclusions included in this non-technical synopsis.

That technical documentation is presented in two volumes:

- The Social and Environmental Assessment Report; and,
- Appendices.

Bujagali Energy Limited (BEL) has begun an integrated Social and Environmental Action Plan (SEAP) that will be updated and maintained throughout the life of the project. BEL will be consulting upon and providing regular updates to its integrated SEAP going forward. The Social and Environmental Action Plan will be a 'living' document that is revised regularly as project development proceeds.

The SEAP is designed to define the specific responsibilities of Bujagali Energy Limited, its contractors and sub-contractors, as well as any third parties, where applicable, to the efficient and responsible management of social and environmental activities associated with the project. It will form one basis for BEL's covenants with its lenders as well as provide a vehicle to demonstrate its compliance with regulatory requirements.

As updates are prepared, the SEAP will be consulted upon regularly with affected stakeholders. Progress on the contents and implementation of the SEAP will be publicly reported upon, as well, at regular intervals on a go-forward basis.

This page is left intentionally blank.



## 1.0 Introduction

### 1.1 Project Overview and History

The Bujagali Hydropower Project (“the Project” or HPP) is a proposed 250 MW hydropower facility on the Victoria Nile in the Republic of Uganda. The project sponsor is Bujagali Energy Limited, a project-specific partnership of SG Bujagali Holdings Ltd. (a wholly owned affiliate of Sithe Global Power, LLC) and IPS Limited (Kenya).

Uganda has long suffered from lack of electricity, and the problem has become acute in recent years. While the emergency thermal generation program of the Government will help to address short term needs, Bujagali is needed to address the medium and long-term need for economical, large-scale, power generation in Uganda. The project and power supply options for Uganda have been the subject of extensive planning and analysis by BEL and others. The overall results these analyses indicate that the project is the least cost and preferred next hydropower project for Uganda. These analyses and this Social and Environmental (SEA) Assessment also indicate that the environmental and social impacts are acceptable and manageable when compared to the significant and long-term benefits to the Country, which will support the Governments goals of poverty eradication.

The hydropower facility will consist of a 28 m high earth-filled dam and spillway works, and associated power station housing up to five 50 MW turbines. It is located at Dumbbell Island, approximately 8 km downstream (i.e. north) of the Town of Jinja (Figure ES-1). The general configuration of the facility is shown in Figure ES-2.

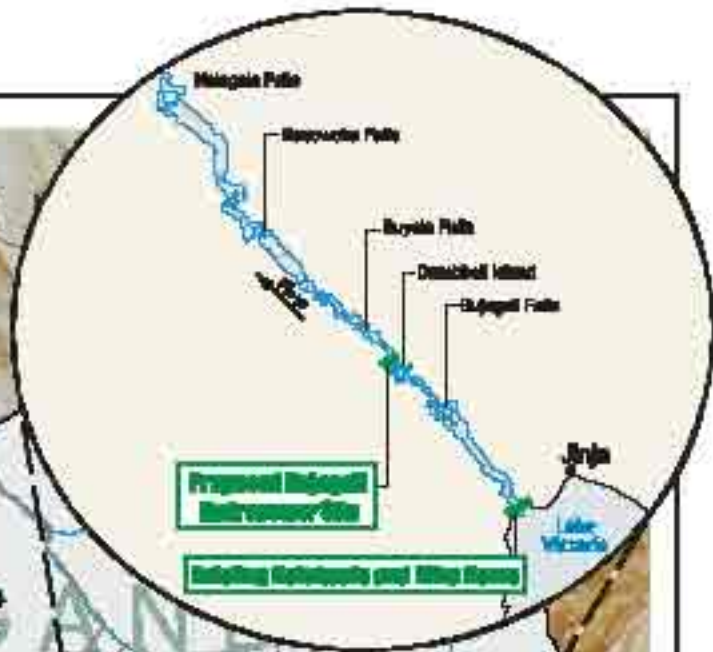
The dam will impound a reservoir that extends upstream to the tailrace area of the Nalubaale and Kiira facilities, inundating Bujagali Falls (ES-4). The reservoir will be 388 ha in surface area, comprised of the existing 308 ha surface of the Victoria Nile, and 80 ha of newly inundated land. The amount of newly inundated land is small, as the reservoir waters will be contained within the steeply incised banks of river.

In total the project will require a land-take of 125 ha for newly inundated land and permanent facilities. An additional 113 ha of land is needed temporarily for the construction of the facility. The land take is shown on Figure ES-4.

In order to interconnect the HPP with the national electrical grid, UETCL is developing the Bujagali Interconnection project (IP). The IP will be constructed, owned, and operated by UETCL. The IP components and the existing transmission infrastructure in the same area are shown in Figure ES-3.

Development of the HPP was initiated by AES Nile Power Ltd., (AESNP) in the late 1990’s. AESNP prepared Social and Environmental Assessment (SEA) documentation

This page is left intentionally blank.



DEMOCRATIC REPUBLIC OF THE CONGO



KAMPALA

JINJA

SSESE ISLANDS

Lake Victoria

TANZANIA

50km

Project Name:  
**BILAGALI HYDROPOWER  
PROJECT EXECUTIVE SUMMARY**  
Prepared for:  
**BIJAGALI ENERGY LIMITED**

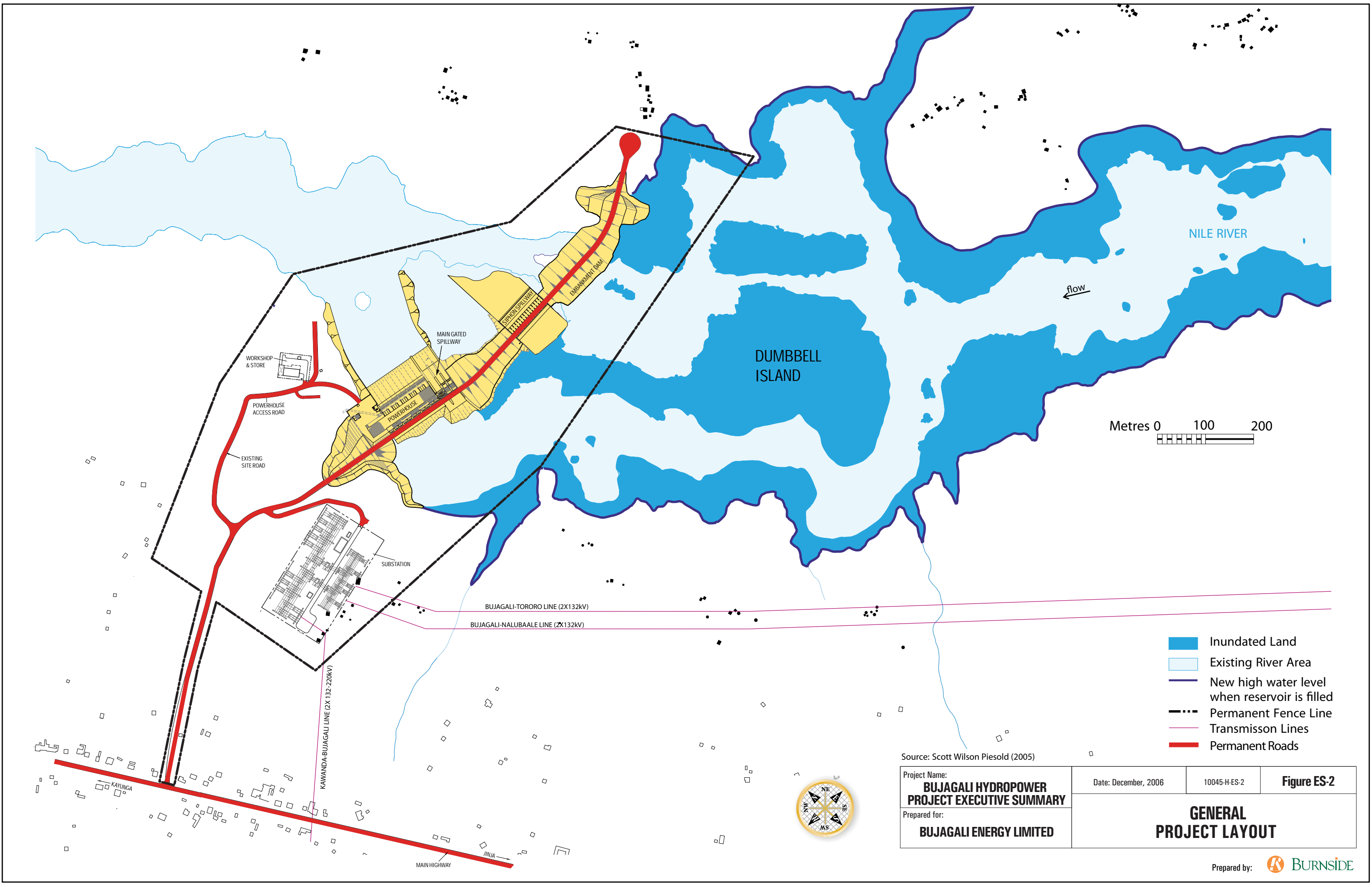
Date: December, 2014

2008-130-1

Figure E8-1

**LOCATION OF THE  
BIJAGALI PROJECT**

This page is left intentionally blank.



NILE RIVER

DUMBELL ISLAND

Metres 0 100 200

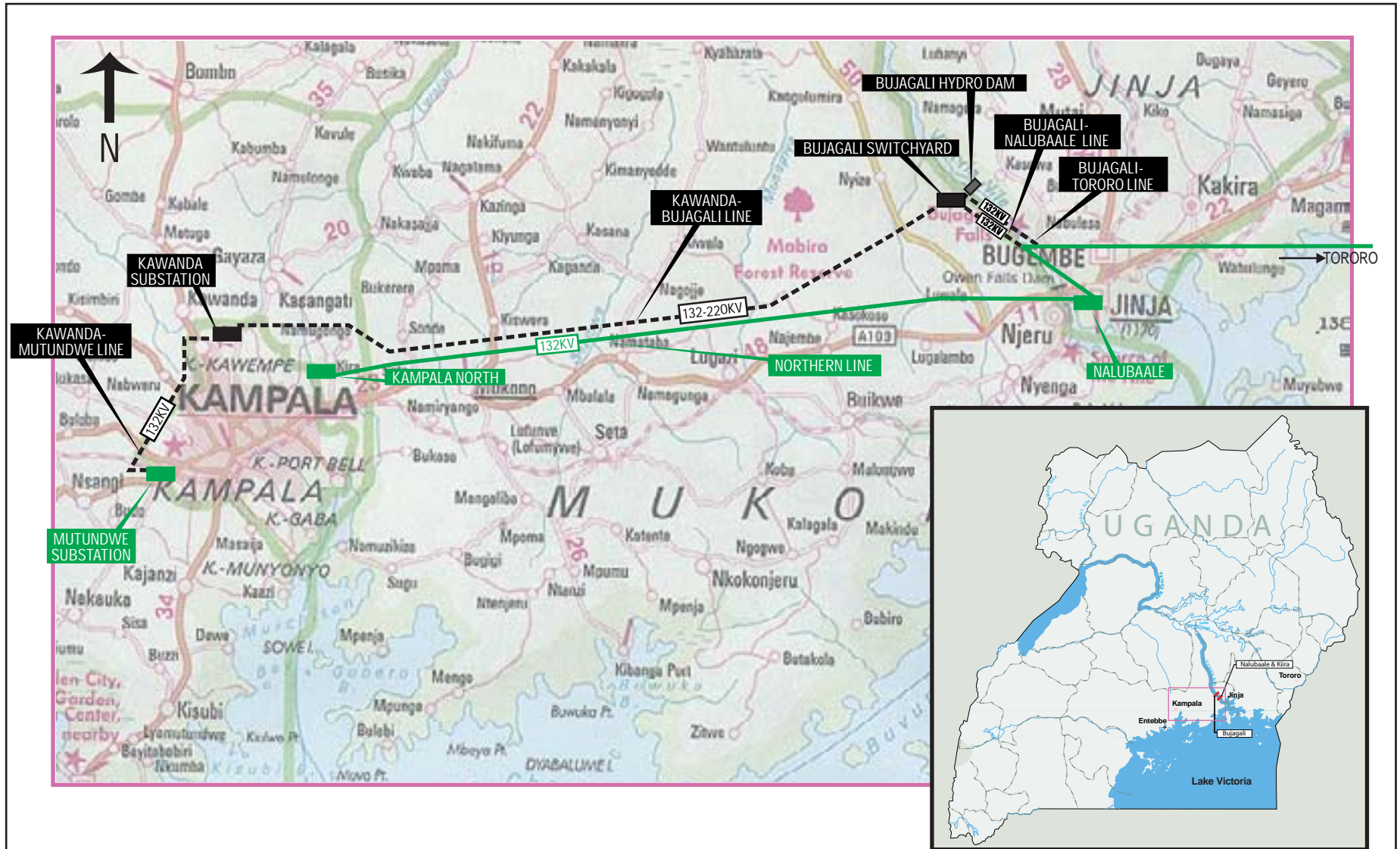
- Inundated Land
- Existing River Area
- New high water level when reservoir is filled
- Permanent Fence Line
- Transmission Lines
- Permanent Roads

Source: Scott Wilson Piesold (2005)

Project Name: <b>BUJAGALI HYDROPOWER PROJECT EXECUTIVE SUMMARY</b>	Date: December, 2006	10045-H-ES-2	<b>Figure ES-2</b>
Prepared for: <b>BUJAGALI ENERGY LIMITED</b>		<b>GENERAL PROJECT LAYOUT</b>	



This page is left intentionally blank.



**BUJAGALI TRANSMISSION NETWORK**

Existing Substations      Existing Lines  
 New Substations      New Lines

*For illustration purposes only. Not to scale.*

Project Name: <b>BUJAGALI HYDROPOWER PROJECT EXECUTIVE SUMMARY</b>	Date: December, 2006	10045-H-ES-3	<b>Figure ES-3</b>
Prepared for: <b>BUJAGALI ENERGY LIMITED</b>	<b>SCHEMATIC OF BUJAGALI HYDRO DAM AND TRANSMISSION FACILITIES</b>		

Prepared by: **BURNSIDE**

This page is left intentionally blank.

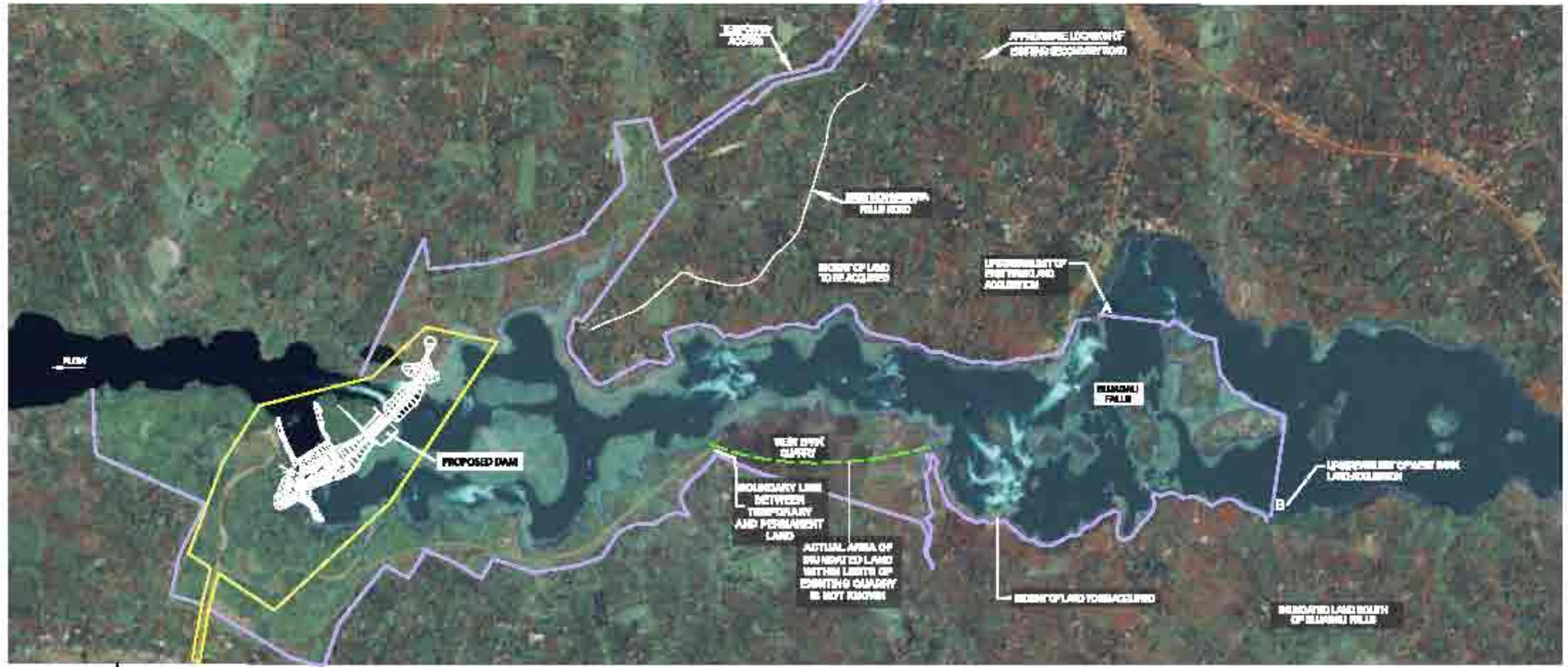




**NOTES**  
 1. The limits of the red trace areas shown on this figure are for illustration purposes only.

**KEY**

- Project inundation limit. Elevation of inundation to be used by Full Supply level (FSL) at 99.12m.
- Area of land to be acquired for temporary works. Upstream limits of land acquisition are shown in blue (for FSL).
- Area of permanent land acquisition (delineated by Yellow Line Only)
- Inundation
- Permanently inundated land



Source: Knight Piesold (2008). Drawing No. 402\_0010

Project Name: <b>BILAGALI HYDROPOWER PROJECT EXECUTIVE SUMMARY</b> Prepared for: <b>BILAGALI ENERGY LIMITED</b>	Date: November, 2008	10/05-11-08-08	Figure ES-4
	<b>PERMANENT &amp; TEMPORARY LAND TAXES (Page 1 of 2)</b>		



Source: Knight Pielke (2008), Drawing No. 007\_0019

Project Name: <b>BULABALI HYDROPOWER PROJECT EXECUTIVE SUMMARY</b>	Date: December, 2008	1008-80248	Figure E3-4
Prepared for: <b>BULABALI ENERGY LIMITED</b>	<b>PERMANENT &amp; TEMPORARY LAND TAKES (Page 2 of 2)</b>		

This page is left intentionally blank.

for the Project that was approved by the Government of Uganda's (GoU) National Environmental Management Authority (NEMA) in 1999/2001 and by the Board of Directors of the World Bank (WB), International Finance Corporation (IFC) and African Development Bank (AfDB) in December 2001.

In 2003 AESNP withdrew, leading the GoU to initiate an international bidding process for the HPP project. In 2005 BEL was selected as the preferred bidder and entered into a power purchase agreement and an implementation agreement with the GoU. BEL expects to complete financing and start construction in 2007. On that timeline, construction would be completed with first power flowing into the National Grid in 2010.

## 1.2 SEA Process and Report

The Social and Environmental Assessment (SEA) was completed in compliance with the requirements of the GoU and the policies and guidelines of the various International Financial Institutions (IFIs) that are expected to finance the project. The purpose of the SEA is to ensure that the project is designed and developed in a manner that minimizes negative social and environmental effects while maximizing project benefits. The SEA Report describes the results of the SEA process. The SEA Report is being made available to stakeholders for their review.

BEL conducted the SEA according to Terms of Reference (ToRs) that were approved by GoU (NEMA) and were made available to IFI representatives, project affected people, NGOs and the general public for their review.

The main SEA work for the hydropower facility commenced in early 2006 including ecological fieldwork, social surveys and consultations with relevant review agencies and potentially affected people and NGOs. Consultations on the draft findings of the SEA were carried out in September and October of 2006. Consultations with stakeholders, including on this draft SEA, are an ongoing feature of BEL's SEA process.

The main sections of the SEA Report, which are summarized in the balance of this executive summary, describe and document:

- The applicable regulatory requirements;
- The existing social and environmental conditions in the study area;
- The need for the project and the alternatives that were analysed;
- The design of the proposed facility, as well as the plans for its construction, operation, and maintenance;
- The consultation program including describing the project responses to issues identified during public consultation activities;

- The potential social and environment effects of the project, along with the proposed mitigation and monitoring measures; and
- The Social and Environmental Action Plan.

## 2.0 Regulatory Requirements

BEL is planning the HPP, and this SEA Report has been prepared, to be in compliance with the regulations and standards of the GoU, and the safeguard policies and guidelines of the following international financial institutions (IFIs) that are expected to be involved in the project.

- The World Bank (IDA);
- The International Finance Corporation;
- The Multilateral Investment Guarantee Agency (MIGA);
- The African Development Bank; and,
- The European Investment Bank (EIB).

The GoU agency with primary responsibility for impact assessment of projects in Uganda is the National Environmental Review Agency (NEMA). NEMA was created under the National Environmental Management Act and mandated with the responsibility to oversee, coordinate and supervise environmental management in Uganda.

The Third schedule of the National Environmental Management Act specifies that any development that involves dams, rivers and water resources (including storage dams, barrages and weirs) or electrical infrastructure (including electricity generation stations, electrical transmission lines and electrical substations) require an Environmental Impact Assessment. An assessment of potential environmental and social effects is also a key policy requirement for all the IFIs involved in the project. For the purposes of this Project the term Social and Environmental Assessment, or SEA, is considered to be synonymous with the different terms used by NEMA and the various lenders for social and environmental assessment documentation.

A concordance analysis has been completed to show how the standards, guidelines and policy requirements of the GoU and the IFIs applicable to the project have been identified, including requirements for:

- Social and environmental safeguard policies, performance standards and guidelines;
- Ongoing stakeholder consultation and engagement;
- Ongoing public disclosure of relevant information;
- Land acquisition and compensation and resettlement planning;
- Mitigation, monitoring and follow up of social and environmental effects; and,
- Social and Environmental Action Plan updating, consultation and disclosure throughout the life of the project.

Where such requirements overlap, as for example is the case for wastewater discharge where the GoU has effluent quality regulations and the WB has effluent quality

guidelines, than the more stringent of the overlapping requirement has been adopted as the project applicable requirement. A complete listing of the social and environmental requirements applicable to the project is provided in the SEA.

### **3.0 Existing Social and Environmental Conditions**

#### **3.1 Project Setting**

The Bujagali HPP is located on the Victoria Nile in south-eastern Uganda. The Victoria Nile is the start of the longest branch of the Nile, known as the White Nile. The source of the Nile is Lake Victoria, Africa's largest water body and the second largest lake on Earth.

The Lake lies within an elevated plateau in the western part of Africa's Great Rift Valley, and straddles the equator. The location of the HPP itself is about 1,100 m above sea level and a few degrees north of the equator.

The discharge of Lake Victoria was dammed in 1954 by construction of the Owen Falls (now Nalubaale) hydro dam. In 2000, a second discharge point from the Lake was created by the construction of a second dam and power plant next to the Nalubaale dam. The Second dam and power plant, originally known as the Owen Falls Extension but later renamed Kiira, went into service in 2000. Page 2 of Figure ES-4 shows the side-by-side layout of the two facilities.

The reach of the Victoria Nile that flows between Nalubaale/Kiira and the Bujagali HPP site is located within a deeply incised, steeply sloped valley, and drops in a series of rapids. In recent years, rapids within this reach, as well as those downstream of the dam site, have been used for white water rafting, and several companies have been established that offer rafting tours to mostly foreign tourists. The river is also used for small scale fisheries and as a source of water for local villagers, and its many islands and rapids hold significant cultural/religious values for local persons and communities.

Jinja town, located on the east side of the river near Nalubaale is the closest large community. The city developed starting in the 1950's when power for industry became available from the Owen Falls project, and is now the second largest city in Uganda. Kampala, the largest city in the country, is located about 70 km to the west of Jinja.

The majority of the study area for the Bujagali hydropower facility is rural, with estate and small-scale or subsistence agriculture being the predominant land uses. Agricultural activity is primarily a labour-intensive, intercropping system with both cash and subsistence crops following the seasonal changes.

#### **3.2 Biophysical Conditions**

Within the project area, the Victoria Nile varies in width from 200 to 600 m, and drops over 20 m in a series of rapids between the Nalubaale power station and



Dumbbell Island. The area has moderate potential earthquake risk for hydropower development thus requiring the project be designed to withstand the Maximum Design Earthquake (MDE) and Operating Basis Earthquake levels.

Since 1954, water flow in the mainstem Victoria Nile has been controlled by the Nalubaale and (since 2000) Kiira power stations. Water flows from the dams have been designed to match the natural outflows from the lake that existed prior to the dams' construction according to the "Agreed Curve." BEL also adopted the Agreed Curve for its design and implementation of the Bujagali Hydropower facility. (This same approach was adopted previously by AESNP.)

Water quality in the river is believed to be acceptable for drinking, and good for aquatic life. There has been little change in water quality values from 2000 to 2006, other than slight increases in nutrients. The quality of borehole groundwater in the area meets World Health Organisation (1993) guidelines.

The northern region of Lake Victoria has an equatorial type of climate. Two rainy seasons can be distinguished from March-May and October-November. Most of Uganda receives between 1,000 and 1,500 mm precipitation. Mean daily temperature varies between 22°C in July and 24°C in February. The mean minimum varies from 17°C in April, with mean maximum varying from 26°C in June to 35°C in February (Bitarakwate *et al.*, 1967). The local meteorology is characterised by a very high frequency of southerly winds. Prevailing southerly winds occur for over 30 percent of the year. Winds from the west-northwest to the east are very infrequent.

The Victoria Nile supports a diversity of aquatic life including plants, phyto and zooplankton, micro and macro-invertebrates, and fish. Key aquatic species to consider from a human-health perspective as vectors of tropical diseases include snails transmitting schistosomiasis; river blindness (Onchocerciasis) transmitting *Simulium damnosum* flies; sleeping sickness (trypanosomiasis) transmitting Tsetse flies; and, female mosquitoes belonging to the genus *Anopheles*, which transmit malaria.

The Victoria Nile originally had a very rich assemblage of fish dominated by riverine species. Significant changes to the environment include the physical barrier to fish movement between the Victoria Nile and Lake Victoria introduced by the Nalubaale dam, and the introduction of Nile perch and Nile tilapia. Viable populations of many fish species continue to exist in the Victoria Nile despite the construction of the Nalubaale dam over 50 years ago. Nine keystone species from a fisheries and conservation perspective, have been identified in the upper Victoria Nile, the majority of which are classified as able to inhabit both lake and river habitats. This is likely due to the variety of micro-habitats offered in this section of the river – from deep, slow-flowing backwaters and 'pond' areas with silty sediments through to rapids with rocky substrates.

The lands within and surrounding the project area are intensively settled and cultivated. The vegetation generally forms an agro-ecosystem with bananas, coffee, maize and vanilla as the main crops. The remnant natural vegetation is characterised as moist semi-deciduous forests. The 2006 vegetation survey identified 298 species in total. Of those identified *M. excelsa* (Mvule) is categorised as “Low Risk/ Near Threatened” in reports published by the International Union for the Conservation of Nature. Other restricted range species include *Ficus cordata* and *Ficus ottonifolia* that have been recorded in only one floral region out of the four that occur in Uganda.

Most of the project area including the islands contains little native vegetation due to intensive agricultural activities. The main crops grown in the area are coffee, maize, sorghum, cassava, sweet potatoes, cabbages, yams, sugar cane and vanilla. Fruits include bananas, mangoes, jackfruit, avocados and pineapples. Eucalyptus is planted for building poles and firewood in Naminya, Malindi and Namizi. The weeds in agricultural areas, some of which are used for medicinal purposes, include woody and non-woody plants

The banks and islands of the Nile in the upstream part of the study area (Bujagali Falls and upstream) are within the Jinja Wildlife Sanctuary which includes the entire Municipality of Jinja as well as the Victoria Nile between Lake Victoria and Bujagali Falls. While the Sanctuary was established in 1953, development along the river has not been restricted and there is no management plan or management activities associated with the Sanctuary. Proposals for activities which may result in the destruction of habitat within a wildlife sanctuary must incorporate suitable mitigation measures, and this principal has been adopted for the HPP.

Kimaka Central Forest Reserve (CFR) is the only protected forest in close vicinity of the project area.

### **3.3 Socio-economic and Cultural Conditions**

There is widespread poverty in Uganda, and the country is consistently ranked one of the poorest nations in the world. Approximately 85 percent of the population in Uganda reside in rural areas and depend mainly on agriculture for their livelihood. Literacy rates are low.

Agricultural activity is primarily a labour-intensive, intercropping system with both cash and subsistence crops following the seasonal changes. The main cash crops are coffee and sugar cane, coupled with more recent cropping of vanilla. Subsistence food crops include bananas, cassava, sweet potatoes, maize, beans, millet, and yams.

The City of Kampala is Uganda’s political and commercial centre. The Town of Jinja, Uganda’s second largest urban centre, serves as the administrative centre for Jinja

District and is the District's prime economic hub, housing industries such as textiles, beer, plastics, food processing, and flour milling.

Within the project area, there are several ethnic groups, mostly of Bantu origins. Busoga is the Kingdom the Basoga people, one of the largest of the five traditional kingdoms in present-day Uganda. The World Bank Group does not consider either group in the area of the project to be indigenous according to the definitions in its safeguard policy and performance standard on that topic.

Historically, the Basoga inhabited the areas of southern Uganda east of the Nile. Buganda is the Kingdom of the Baganda people, who historically inhabited the areas west of the Nile. This is still largely the case, although Basogans and Bangandans live on both banks of the river, today. Although the Busoga and Buganda languages vary, they are similar to one another and mutually understandable. Many people still practice traditional religions, although they are often practised in concert with Christianity and Islam. Several people have *amasabo* (roughly translated as shrines) on their properties where they can pay respect to their ancestors and commune with spirits.

Between Nalubaale and Dumbbell Island, there are groups of islands, some of which have become intensively farmed during the last few years. The rapids have been used to develop a tourist destination for white water rafting since the late 1990's, and the islands and rapids have significant cultural/religious value for local people. They also are reported to have been used for grave sites by local people.

Malaria and respiratory infections account for about half of all outpatient diagnoses in Uganda. The prevalence of HIV/AIDS is high, with HIV/AIDS-related illness accounting for over 30 percent of all hospital admissions, and increasing. In an effort to address the spread of HIV/AIDS, widespread public education campaigns have been established and condoms are readily available.

### **3.4 Recent Activities in the Project Area**

The early stages of development, and subsequent abandonment, of the Bujagali Project by AESNP had effects on the local social baseline conditions that persist. Prior to its departure, AESNP aggressively pursued its resettlement programme which included the physical relocation of people from lands to be used by the project on both banks of the river Nile. While certain of those lands are currently guarded and fenced (west bank) and monitored, others are still being used for short-term agricultural activities (east bank) on the understanding that they will no longer be available for such uses when the project is re-started.

Since AESNP's departure in 2003, the Government of Uganda has maintained a presence in the project area through a small group of UETCL employees working as

the Bujagali Implementation Unit (BIU). The BIU has maintained contact with local people, monitored their issues and concerns, and done its best in the face of very limited funding and resources to at least be aware of the local socio-economic conditions. In the absence of a private sector sponsor with the necessary permits and financing to pursue the project actively, the BIU's activities on behalf of the GoU have helped maintain a certain presence and contact with local people while the project was re-bid and re-started.

As a result of the project hiatus, certain of AESNP's commitments to regulators and the communities under its resettlement and community development plans were not completed. In recognition of these issues and their currency with affected stakeholders, BEL has undertaken to document the situation, and in selected instances began immediate action programmes to respond. Those BEL actions, as well as its commitments to its own resettlement and community development activities, are presented to the level of detail consistent with the present status of the project in the SEA documentation. The ongoing, increasingly detailed plans and activities will be documented on a regular basis in the project's Social and Environmental Action Plan (SEAP). The revisions to the SEAP will be consulted upon with affected stakeholders and publicly disclosed as they are prepared on a regular basis.

This page is left intentionally blank.

## **4.0 Project Need and Alternatives**

Historical and ongoing analyses of the power supply options for Uganda confirm that the Bujagali HPP is needed, and that it is the preferred and least cost solution to addressing the long standing power shortages in Uganda. A summary of the need and rationale for the HPP, and the extensive analyses of alternatives that has been completed as part of the design of the HPP, follow.

### **4.1 Need and Rationale for the Project**

Uganda has suffered for many years from shortages of electricity and this situation has been exacerbated in recent times due to the drought in the region that has contributed to the lower level of Lake Victoria.

Throughout the 1990s the electricity demand was greater than generating capacity, and therefore load shedding was required to balance the system. In 2000 the increased capacity provided by the commissioning of the first two 40 MW units at Kiira power station relieved the load shedding. However, the drop in water levels in Lake Victoria due to the drought and to increased flows through the two dams has led to reductions in the availability of water for power generation, forcing more severe load shedding.

The demand for electricity has steadily increased in step with the strengthening and expansion of the economy, and it is possible that a shortage of capacity could occur even with the Bujagali project in service.

To address the short term load shedding the government is implementing a costly emergency thermal generation program using high-speed reciprocating engines fuelled with diesel oil to generate 100 MW of power. This power will be costly due to the need to import relatively expensive diesel fuel, and the high operating cost of high-speed units. Therefore, the high-speed units are only planned to operate until 2010 when more economical, renewable and clean power becomes available from the Bujagali HPP.

Even so, the Bujagali HPP will not address the full shortfall of energy, thus the GoU is pursuing additional generation from medium-speed reciprocating engines fueled with heavy fuel oil (100 MW), cogeneration at sugar works (15 MW), and mini hydro (41 MW).

### **4.2 Alternative Power Generation Technologies**

The alternatives to developing Bujagali are to do nothing, or to develop an alternative source or sources of power. The do nothing alternative would mean that the up to 250 MW to be provided by Bujagali would be supplied by extending indefinitely the operation of the expensive high-speed emergency thermals, and by increased load

shedding. This would have a long term significant effect on the economy and the people of Uganda.

Given the large, and growing, gap between electricity supply and demand in Uganda, a number of electricity generation alternatives studies over various planning horizons has been completed and options examined and prioritised for the country. The generation alternatives for the next 20 years in Uganda include:

- Wind-generated electricity;
- Geothermal electricity;
- Solar-generated electricity;
- Small scale hydroelectric development;
- Co-generation facilities;
- Biomass-generated electricity;
- Thermal power plants;
- Large scale hydroelectric development; and,
- Demand management measures which reduce the need for the above-noted types of projects and bring more efficiency to the national system.

The general conclusions from the evaluation of these generation alternatives is that large-scale hydroelectric development remains the most economical way forward for the country in the short-medium term. The Victoria Nile is the primary hydrological resource available in Uganda to meet the growing electricity demand in the country.

An ongoing study by Power Planning Associates is reassessing the various alternative power generation technologies currently available to Uganda. Preliminary unpublished results from that study which is expected to be published in Q1 2007, confirms that large-scale hydroelectric development provides the least cost option for the country in the short-medium term.

### **4.3 Alternative Hydropower Development Sites**

Six potential hydropower sites along the Victoria Nile have been examined in some detail by a number of studies in recent decades. One of those sites (at Kalagala Falls downstream of Bujagali) is no longer an option as the Government of Uganda has committed to the preservation of the falls and its environs as an ‘offset’ for social and environmental impacts incurred with the development of the Bujagali project. Overall, two projects – Bujagali and Karuma – emerge as the preferred hydropower options for Uganda based on a range of criteria and a variety of comparative methodologies.

The above-mentioned report in preparation by Power Planning Associates for the World Bank Group is an Economic and Financial Evaluation Study to determine the viability of the Bujagali HPP, including a comparison with the Karuma project. The

preliminary results from that study indicate that Bujagali is the least cost option compared to Karuma by a significant margin.

Another recent report prepared as part of the Nile Basin Initiative examined the “Strategic/Sectoral, Social and Environmental Assessment of Power Development Options in The Nile Equatorial Lakes Region” (SSEA). One objective of the study was better definition of the actions that must, in the advancement and approval of new generation and transmission projects, be taken to improve electricity supply, in terms of reliability of supply, cost, environmental and social acceptability, and regional integration.

The SSEA report states that, of all the electricity supply options studies and evaluated across the ten countries that are within the Nile Equatorial Lakes Region, Bujagali was one of three projects that “should be implemented as soon as possible,” as Uganda is suffering from serious power outages. It identified Bujagali as a project that could be installed in the short to mid-term, at low cost and with acceptable environmental and social impacts.

#### **4.4 Evaluation of Alternative Hydropower Configurations**

Alternative project configurations at, and around, the Bujagali HPP site have also been investigated. The objective was to compare and evaluate possible options to provide the rationale for selection of the preferred design approach. Key considerations in the comparison are the potential power output of the different options, their financial costs and their relative environmental and socio-economic implications.

An initial 1998/1999 assessment considered five configurations for the dam. In addition, two further configurations were identified, one a diversion canal at Bujagali to avoid the inundation of Bujagali Falls and the other a dam and reservoir configuration at Busowoko Falls with a lower full supply level, again to preserve the falls and the river downstream to Dumbbell Island.

Further reviews of alternative configurations at Bujagali were carried out in 1999/2000 and again in 2005/2006. They included two additional options at Busowoko Falls and further consideration of the differences in environmental impact between the two options at Dumbbell Island. The review concluded that the now-preferred option at Dumbbell Island is more favourable not only on technical and economic grounds, but also from an environmental and social perspective. These analyses re-confirm the hydropower facility configuration that BEL is now seeking approval for.



This page is left intentionally blank.

## 5.0 Project Description

The HPP involves using the power of falling water to spin a turbine and generate electricity. A 28 m high earth-filled dam will be built on the Victoria Nile at Dumbell island to create a corresponding large water drop, or head. The water will flow by gravity through the turbines, causing them to spin, which in turn causes electrical generators to spin, and thereby generate electricity. There will be up to five 50 MW turbine-generator sets installed giving a totally installed capacity of up to 250 MW. The dam will include a spill way such that water not needed for power generation can be safely diverted over the dam to the river below.

The HPP will be using the same water that is released from the existing Nalubaale and Kiira facilities, which are located about 8 km upstream and which, together, control the flow of water from Lake Victoria. The side-by-side arrangement of Nalubaale and Kiira is shown on Page 2 of Figure ES-4. Water that flows through the turbines at Nalubaale or Kiira will now also run through the turbines at Bujagali, thereby generating about twice the amount of power from the same amount of water released from Lake Victoria.

The project requires a permanent land take of about 125 ha land: 45 ha for the permanent project facilities and 80 ha of newly inundated land. A temporary land take of about 113 ha of land will also be needed to facilitate construction. The land take areas are shown on Figure ES-4. The temporary land will be restored to conditions suitable for parkland, forestry or agriculture.

The dam will create a reservoir extending 8 km upstream to the Nalubaale (formally Owen Falls) and Kiira (formally Owen Falls Extension) facilities. The existing rapids within this section, including the rapids at Bujagali Falls, will be flooded. The reservoir will be relatively small because the waters will be contained within the steep banks of the Victoria Nile. At 388 ha, the surface of the reservoir will only be 88 ha greater than the existing 300 ha surface area of the river as it exists without the dam. The existing river and the area to be flooded are shown on Figure ES-4.

AESNP, the previous project sponsor, completed the land acquisition and resettlement and relocation of all residents formerly located in the reservoir area and compensated landowners and other project affected persons. As there are some unresolved resettlement issues, BEL has prepared an “Assessment of Past Resettlement Activities and Action Plan” (APRAP) with the objective of resolving those issues. The complete APRAP is included in the SEA documentation.

In addition to the dam, spillways and powerhouse, various other buildings and structures will be developed on the west bank to support the power station, including an access road, telecommunications, stand-by diesel generator, workshop and stores.

The permanent site will be accessed from the public highway that runs along the west bank of the river.

The facilities will be constructed by an Engineering, Procurement and Construction (EPC) Contractor, who will develop the detailed construction plan once it has been engaged on the project. However, in general the following is expected. Construction will take place over a 44 month period, and is expected to involve a peak labour force of more than 1,000 persons. Workers will be housed in Jinja and environs – there will be no on-site workers camp.

A quarry will be developed at the site to produce the necessary aggregates and rock fill material needed to construction the dam and other facilities. A batching plant will be installed for on-site production of concrete. Cofferdams shall be used to divert the river into, first the east channel around Dumbbell Island while the west portion of dam, spillways and powerhouse are built, then the west channel whilst the east portion of the dam is built. Finally, the second set of coffer dams will be removed and the reservoir filled allowing power generation to begin.

Most heavy machinery, equipment and manufactured products needed for the facility will need to be imported into Uganda. Most goods are expected to arrive in Africa at the seaport of Mombassa in Kenya and be transported overland by truck to the site.

The reservoir offers very little storage of water – essentially all water released at Nalubaale/Kiira will subsequently be released at Bujagali. The water levels in the reservoir may fluctuate by up to about 2 vertical metres, depending on how the Government chooses to control flows and power generation.

A permanent work force of about 30 to 50 people will be needed to operate the facility. It is expected those workers will reside in Jinja or environs.

## 6.0 Public Consultation and Disclosure

### 6.1 Consultation Program

BEL, together with UETCL, has undertaken extensive consultations as part of the SEA work for the HPP and the IP. Because the projects are closely associated, some of the consultation activities were closely integrated. For example, public meetings held on the west bank of the Nile discussed both the HPP and the IP. In addition, BEL retained the services of a witness NGO (InterAid Africa) in August 2006 to provide independent monitoring of the consultation activities, and to provide a mechanism for stakeholders to file a grievance with the SEA processes.

Overall, the consultation activities and disclosure program has been designed so as to maximise community awareness of the proposed project and SEA study and report and to maximise opportunities for community input and involvement. The approach was designed recognizing that extensive consultations and community engagements were completed by AES Nile Power, and following their withdrawal, ongoing consultations have been carried out by UETCL's Bujagali Implementation Unit. By all indications, the starting point was a relatively high awareness level of the project; this was confirmed through the initial community consultations undertaken as part of this SEA in August 2006.

The consultation activities have been organized into six distinct phases, as illustrated on Figure ES-5. The stakeholders that are involved in the consultation activities, and the consultation modalities, are summarized in Table ES-1. The consultation program has been designed, and will continue to be implemented, in a manner to ensure participation from women.

**Table ES-1: Consultation Activity Summary**

Stakeholders	Consultation Activities
National Public	Project notices in national newspapers, web site and making documentation available to all interested parties.
Government Agencies	Meetings were held with various government agencies and SEA documentation was/is being circulated through NEMA.
NGOs (national and local)	Numerous NGOs were identified and contacted to arrange meetings with to discuss their concerns and interests. Project documentation was circulated to the NGOs and offers made for additional meetings.
Local Communities	Contact was made with District and Sub-County level governments to inform them of the project. Sub-County Consultation committees, which included women and representatives from vulnerable groups, were established to assist in consultation activities with local villages. Public meetings were held in the affected communities to advise people of the project and to receive their comments and concerns.

Stakeholders	Consultation Activities
Project Affected Persons	PAPs were resettled under the previous SEA process undertaken by the former project sponsor. Socio-economic audit surveys were undertaken with the PAPs, including women, as part of this process and an action plan has been prepared to deal with remaining issues. Additional surveys were also undertaken with the “fishers” community in the project area.
Vulnerable groups	Vulnerable group representatives, including women, were included on the Sub-county Consultation Committees.
Business Operators	As part of a separate tourism impact study that was undertaken, key affected businesses were consulted through individual interviews. Subsequent discussions between the tourist operators and BEL regarding mitigation/compensation due to the flooding of Bujagali Falls have been ongoing. Discussions with the employees of the tourism industry have also occurred and actions to deal with potential loss of income (either temporary or permanent) have been proposed.
Tourist/visitors	The interests of tourists were identified in the above mentioned tourism impact study.
Cultural Groups	The Kingdoms of Buganda and Busoga were directly consulted with through meetings and the submission of project documentation. These consultations are ongoing.
Indigenous Peoples	In consultation with WBG specialists, it was determined that no indigenous peoples, as defined for the purposes of World Bank and IFC policies and Performance Standards, were identified to be resident within the project area of influence.

As a result of Phase 1-3 engagement and consultation activities, a number of issues were identified and which were taken into account in the preparation of the SEA. A comprehensive listing of the issues identified and project responses are provided in Table ES-2.

**Table ES-2: Summary of Key Issues and Responses**

Issue	Response
<b>Issue 1: Past resettlement activities</b>	The eight affected communities and people resettled by the previous project sponsor indicated that some of the commitments of the previous project sponsor were unfulfilled. An audit of the past resettlement activities was undertaken and an <i>Assessment of Past Resettlement Action Plan (APRAP)</i> report prepared that outlined the concerns/issues and proposed activities to be undertaken. BEL has committed to resolve certain of these past resettlement issues in the immediate future and prior to construction initiation. Some actions have already been taken such as the installation of new pumps at the boreholes in each village. Consultation on resolving these past problems has been occurring by the BIU and is expected to continue into 2007.

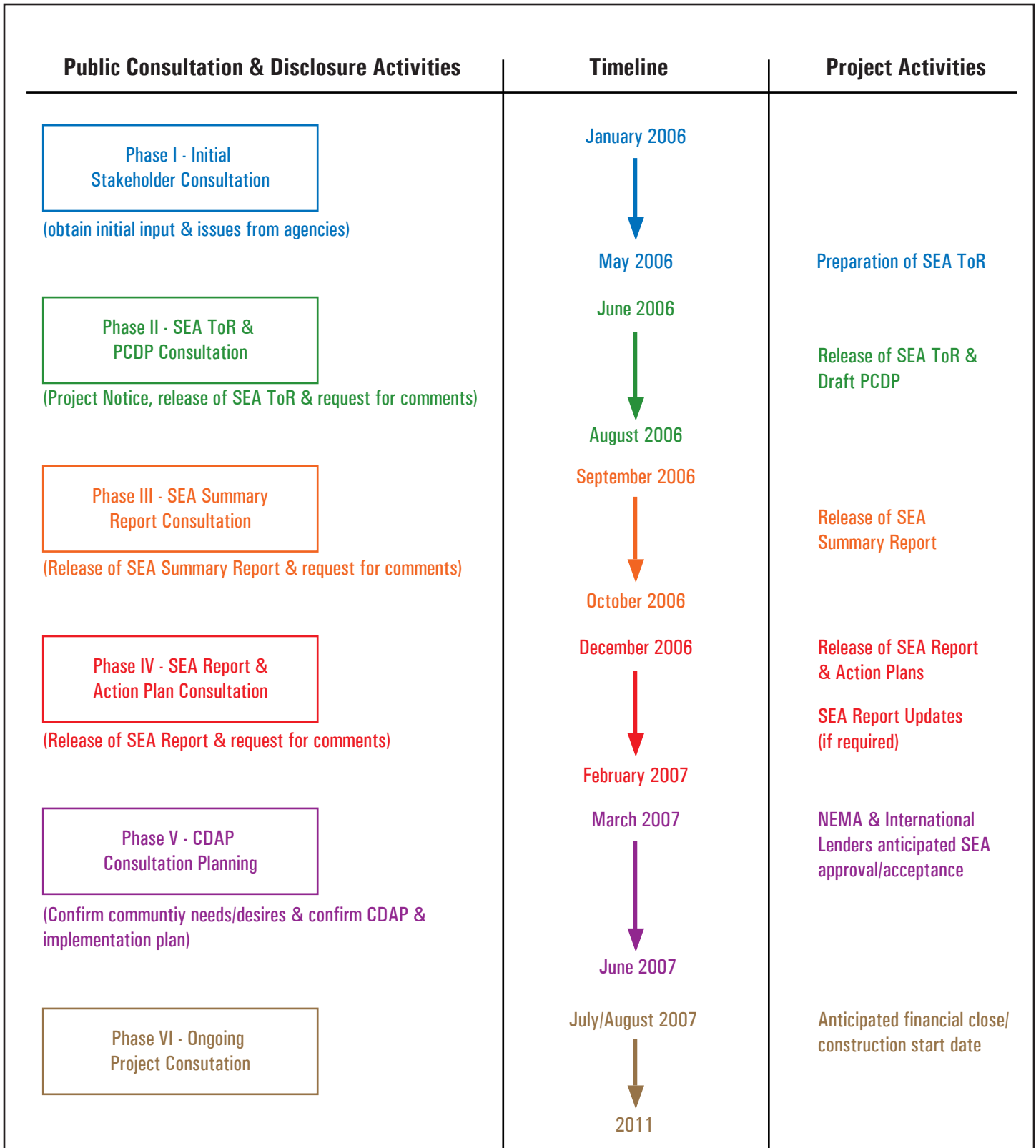
<b>Issue</b>	<b>Response</b>
<b>Issue 2: Community development opportunities</b>	<p>The local residents and local governments have clearly indicated an interest to take advantage of development opportunities as a result of dam construction. As an example residents have expressed interest in offering housing to the construction workers. As part of the CDAP, it is proposed that a market area be developed near the construction site where local products could be sold to the workers. As well, a resource/job skills centre is to be developed on both banks and a micro credit scheme to allow people to develop their own business enterprises.</p>
<b>Issue 3: Cultural impacts</b>	<p>Local communities and the Busoga Kingdom indicated that spirits associated with the Bujagali Falls, and perhaps other sites in the area, were not been adequately appeased by AESNP. BEL has initiated consultations with the cultural leaders of Busoga Kingdom to develop a programme to address this concern.</p>
<b>Issue 4: Construction workforce impacts</b>	<p>Local residents expressed concerns in regards to the social and health consequences of migrant workers coming into their community.</p> <p>There are no camps or residential complexes suitable for housing a large workforce currently available in Jinja. It is expected that a variety of housing would be used, including use of the existing housing stock including hotels, as well as new purpose built housing. The specific size, design, and location for such housing will be determined by the EPC Contractor, under advisement from BEL and in consultation with local authorities. The housing plan will be developed keeping in mind the objective to maximise local benefits and minimise avoid and community health problems. The detailed accommodations plan for the workforce will be provided in the SEAP prepared following the selection of the EPC Contractor by BEL.</p> <p>As well, a comprehensive Aids/HIV programme is to be implemented (with the assistance of the Ugandan Aids/HIV NGO TASO or similar organisation) which is to involve education programmes for both the local community and the workers. The hiring practices of the EPC Contractor will be designed so as to minimise people showing up for work on a regular basis.</p>
<b>Issue 5: Local community access to electricity</b>	<p>Local communities have expressed interest in getting improved access to electricity as a community development initiative. It has been explained to the communities that electrical distribution is the responsibility of UMEME, which is a private company. BEL is committed to work with the communities and UMEME to facilitate improved access to electricity. This might include first providing electrical connections to community centres in each of the 8 villages.</p>

Issue	Response
<b>Issue 6: Employment opportunities/ training</b>	There is widespread interest in employment opportunities, and an expectation that local community members would receive priority in employment opportunities. As part of the CDAP, BEL has committed to implementing training programmes (with the assistance of local institutions) to assist local people in gaining access to employment. BEL will also direct the EPC Contractor and its sub-contractors to give preferential treatment to the local community in their hiring practices.
<b>Issue 7: The need to consult with Communities in implementing the CDAP</b>	The communities and NGOs have indicated the needs to engage the communities in the finalisation of the CDAP and the formation of the implementation plan for it. BEL is committed to undertake ongoing consultation activities with the local community in advance of construction start-up to help prioritise community needs and to finalise the CDAP.
<b>Issue 8: Potential for job loss by the tourism industry employees and by self-employed and informal workers in the tourism industry</b>	Tourism industry workers expressed concern that their jobs will be lost once the dam project begins. As part of the APRAP and CDAP, BEL will be supporting tourism initiatives, particularly those which will ensure continuity of employment of existing employees. Discussions with the tourism company owners indicate that with support many are anticipating growth. The APRAP includes provisions for monitoring this situation, and addressing issues should they arise.
<b>Issue 9: Safety issues from construction traffic along the west bank road</b>	West bank communities expressed concern about the safety risks associated with construction traffic along the main west bank roadway. The road is heavily used by pedestrians including school children. BEL is aware of this issue and will continue to consult with the local communities to develop appropriate measures to be included in the Construction Traffic Management Plan to manage and monitor the issue.
<b>Issue 10: That the local community needs to benefit from the project</b>	BEL agrees that the local communities should benefit socially and economically from the project. As such, a comprehensive CDAP is to be implemented with a focus on the agricultural industry (As it is the dominant economic activity in the area). Overall, the employment benefits (direct and indirect) and induced economic benefits from the project are expected to be significant for these communities.

<b>Issue</b>	<b>Response</b>
<b>Issue 11: Concerns from the east bank communities that they will not benefit as much as the west bank communities</b>	As most of the project facilities and the construction activities will be focused on the west bank, east bank communities and the Busoga Kingdom are concerned that they will receive much less benefit from the project, even though the river and dam are within the Kingdom (the west bank is reported to be the boundary between the Busoga and Buganda Kingdoms). BEL is committed to providing programmes and opportunities to both east and west bank communities in an equitable manner. As an example, resource/training centres will be developed on both banks of the river. As well, it is expected that the majority of alternative tourism development benefits will accrue to the east bank.
<b>Issues 12: Local institution interest in participating in the project</b>	NGOs, CBOs and GoU agencies have all indicated an interest in participating in the project such as through assisting in the delivery of the CDAP and environmental monitoring of mitigation/restoration activities. BEL is willing to work with the existing institutions and will engage them in dialogue beginning in early 2007 as part of the process to develop the project implementation plans leading up to construction start-up.
<b>Issue 13: Loss of access to the river</b>	Some (particularly Fishers) have indicated that river access has been limited (due to fencing) and are concerned about further access restrictions once the construction period begins. Although some fencing along the west bank has been installed, access to the river has not been cut off and use of the river in the vicinity of the project has and is continuing. When construction start formal access ways and landing sites will be provided to ensure access the river.
<b>Issue 14: That the Bujagali project will exacerbate the low water levels in Lake Victoria</b>	There is concern that once operational, the Bujagali Dam would create additional pressure for increased releases from Lake Victoria. The Bujagali dam project will allow for the reuse of the same water that the existing hydro facility at Jinja uses. By reusing this same water, it is possible that water volume release could be decreased as there would now be less demand on the existing hydro electric facilities.
<b>Issue 15: How have safety issues associated with the aging Nalubaale facilities been addressed?</b>	To address safety issues, BEL will form the Bujagali Dam Safety Panel (BDSP). The BDSP, consisting of three technical experts, will provide advice through final design, construction, and initial filling and start-up phases of the dam. Safety risks will be addressed as part of the Panel’s terms of reference.



This page is left intentionally blank.



Project Name: <b>BUJAGALI HYDROPOWER PROJECT EXECUTIVE SUMMARY</b>	Date: December, 2006	10045-H-ES-5	<b>Figure ES-5</b>
Prepared for: <b>BUJAGALI ENERGY LIMITED</b>	<b>PUBLIC CONSULTATION AND DISCLOSURE ACTIVITIES</b>		

This page is left intentionally blank.

## 6.2 Grievance Management Mechanisms

Grievance mechanisms have been included in the Resettlement Action Plan (RAP) studies for this project for both the hydroelectric component and its associated interconnection (transmission) system. They were available during the AESNP sponsorship of the project and were re-instated by BEL for the RAP work under its sponsorship. Going forward, the availability of a Grievance Mechanism will be advertised with the other project notifications regarding the release of the SEA Reports. The advertisements will include the contact information for the Witness NGO (InterAid). A grievance form has been prepared and will be available through the chairpersons of the local villages. The Sub County Committees will also be used to channel the forms and vet the grievance issues. They will identify which ones can be solved locally or one that has to go to higher level beyond the village and Sub-county. Generally, community leaders know the individual PAPs and have the political and social responsibility for the community members. Once a grievance is received, InterAid will investigate the concern and first make a determination of its legitimacy. Assuming the issue to be a valid concern, InterAid will communicate the issue to BEL and facilitate the process to resolve the issue. Responses and actions (if necessary) to resolve the grievance will be communicated to the individual who submitted the grievance. A written record of all grievances received, and how they were dealt with, will be kept by InterAid and BEL.

## 6.3 Disclosure Program

In promoting transparency and accountability, BEL has and will continue to provide relevant material in a timely manner prior to consultation and in a form and language that are understandable and accessible to the groups being consulted. To date, BEL has disclosed the following documents:

- SEA ToR and the draft PCDP;
- Consultation Summary of the draft findings of the SEA;
- HPP SEA Report, which includes APRAP, CDAP, and PCDP.

The SEA ToRs and draft PCDP were distributed in July 2006 to the National government (NEMA) and local government stakeholders (sub-county level). The Consultation Summary Report was released in late September 2006. The final SEA Report was released in December 2006.

The SEA Report and Actions Plans are being made available to the other identified stakeholders and the public at large at publicly accessible locations and on the BELs web site: [www.Bujagali-energy.com](http://www.Bujagali-energy.com).

This page is left intentionally blank.

## 7.0 Impact Identification and Management

This SEA adopts a project life cycle assessment format. It focuses on the development of specific management initiatives for all phases of the project to ensure that: i) the people closest to the project receive the projected benefits; ii) potentially negative environmental and socio-economic impacts are minimised; and iii) potentially negative health and safety impacts are kept to a minimum. To optimise the life cycle assessment, linkages between potential impacts (i.e., key environmental issues), mitigation measures (i.e. management actions), net effects (i.e. residual effects), and monitoring programmes (i.e. management decision tools) are explicitly made.

This section summarizes:

- Compliance screening of the project against Government of Uganda Legislation, International Treaties and Conventions Ratified by Uganda, and project applicable safeguard policies, performance standards and guidelines;
- Identification and analysis of community benefits and economic and developmental benefits; and,
- Identification and analysis of key project issues, and net effects analysis.

### 7.1 Compliance Screening

A screening exercise, the details of which are presented in the SEA Report, confirms that the project complies with:

- GoU statutes and regulations;
- Relevant international environmental treaties and conventions; and,
- Project applicable standards as determined from the concordance analysis of the social and environmental policies, performance standards and guidelines applicable to the project.

### 7.2 Project Benefits and Community Development

#### 7.2.1 Project Benefits

The HPP will generate a number of economic and developmental benefits at both the macro-economic level and the local level, and is expected to make a major contribution towards the GoU goal of poverty eradication. The key macro-economic benefits that are expected include:

- Reducing electricity rationing and the associated costs of alternative self-generation;
- Create conditions to attract direct foreign investment to Uganda;

- Increase productivity and lower costs for government, education, health, business and industry;
- Facilitate rural electrification; and,
- Minimise cost of electricity for consumers.

Overall, it has been estimated in some reports that every month that the Bujagali project is delayed costs the economy approximately 10 to 15 million dollars. The project is also expected to help reduce noise and air emissions generated by the numerous small generators that are used to provide electricity during blackout periods.

Local economic benefits from the project are those which accrue to employees and the wider community over and above the benefits accruing from alternative income-generating activities. These include:

- Direct employment of Ugandans during construction (600 to 1,100 persons) and operation (50 persons) of the project;
- Induced employment (an estimated 9,000 to 16,500 jobs during construction and 250 during operations) and increased trade in service industries, particularly during the dam construction period; and,
- Benefits from indirect employment and trade, in industries and commercial activities, which become established as a result of the greater availability of electricity.

### **7.2.2 Community Development Program**

BEL has developed a Community Development Action Plan (CDAP) which sets out proposed actions that will benefit the wider communities in the project area, beyond those individuals and households who have been or will be directly affected, such as by loss of land, crops or other assets.

The area that will benefit from the CDAP consists mainly of the eight directly-affected villages: four on the West Bank (Mukono District): Naminya, Buloba, Malindi, Kikubamutwe; and, on four the East Bank (Jinja District): Bujagali, Ivunamba, Kyabirwa and Namizi.

The following criteria were considered when the CDAP was developed:

- Programmes should be based on local conditions and the needs of directly affected communities, identified using culturally appropriate means of consultation;
- Programmes are to be sustainable; and,
- Partnerships are to be established with credible local NGOs.

The objectives of the CDAP are as follows:

- To improve opportunities for higher incomes or living standards of Project-Affected Persons and the affected area as a whole;
- To improve quality of life in the affected area; and,
- To provide a safety mechanism for vulnerable persons.

BEL proposes to support long-term sustainable development initiatives, rather than to generate them. The CDAP was developed, based on the following strategy:

- Construction of the hydropower facility will provide direct sources of employment to directly-affected persons;
- Local communities should benefit from indirect employment opportunities;
- Water supply within the directly affected communities will be improved;
- Improved marketing of farm produce can improve farm incomes;
- New sources of non-agricultural income are needed for women and young people, given the current land scarcity;
- Financial services and training to directly-affected persons is required in order that sudden access to cash compensation is handled wisely;
- Better access to credit is critical for development of small-scale businesses;
- Recreational facilities are important for a good quality of life; and,
- A social safety mechanism is needed for those Project-Affected Persons who may have difficulties due to the displacement/compensation/resettlement process.

The key areas where benefits are expected include:

- Health care facilities;
- Employment opportunities;
- Water supply;
- Electricity;
- Fisheries;
- Training and financial services;
- Education;
- Tourism; and,
- Community resources.

### **7.3 Key Project Issues and Net Effects Analysis**

Table ES-3 highlights the key project issues, as well as the corresponding avoidance, protective and mitigative measures relevant to the construction and operational phases of this project.



**Table ES-3: Summary of Project Effects, and Impact Mitigation and Effects Monitoring Activities**

Project Issue	Summary of Mitigation and Net Effects
Resettlement and Land Compensation	<p>Corrective actions will be undertaken to ensure those resettled by the previous project sponsor are no worse off as a result of the project. Land required for the construction and operation of the hydropower facility totals 238 ha. Landowners were either resettled or provided cash compensation for loss of land by the previous project sponsor. Eighty-five households were displaced. An assessment survey of the resettled villagers was undertaken by BEL as part of this SEA process to confirm whether any unresolved issues remained. BEL has initiated an Assessment of Past Resettlement Activities and Action Plan (APRAP) to resolve these remaining issues. Immediate corrective activities being undertaken by BEL include: provision of new water supply hand pumps at 17 existing bore hole locations in the surrounding communities; improvements to education facilities in the 8 affected communities; and, improvements to the health facilities at the Naminya resettlement site.</p>
Effects on Land	<p>There will be permanent and temporary loss of agricultural land. Temporary land take areas will be reinstated to a condition that will make it possible for the land to be used for agriculture, forestry or industry.</p> <p>To minimise impacts to terrestrial habitat, BEL will:</p> <ul style="list-style-type: none"> <li>• Do enrichment planting to regenerate forest vegetation on island land not inundated but previously logged or cleared for agriculture, as well as land along the mainland shore.</li> <li>• Plant native and medicinal tree species in areas of the riparian strip that are currently bare or planted with cash and/or subsistence crops, in order to control erosion and to provide (in the long term) roosting sites for birds and bats.</li> </ul> <p>The portion of the quarry that will remain above water level, i.e. form the new riverbank, will be profiled and planted such that it has a similar landscape to equivalent areas above the water line prior to construction, and blends in with the profile of undisturbed areas.</p>
Effects on Hydrology	<p>The HPP is not expected to significantly alter or affect the hydrology of Lake Victoria or the Victoria Nile. The quantity and timing of water released from Lake Victoria will continue to be controlled by the operation of the Nalubaale and Kiira facilities. Because the reservoir for the HPP is small it can only hold back a few hours of flow, and therefore it will essentially pass-through whatever flows are released by Nalubaale and Kiira.</p> <p>The only significant concern related to hydrology is concern for public safety from fluctuating water levels immediately downstream of the dam. Further analyses, and a stakeholder engagement program, are proposed to address those concerns through a management plan to be developed. Fluctuations further downstream are not expected to be problematic, and not expected to be significant in Lake Kyoga or beyond.</p>

Project Issue	Summary of Mitigation and Net Effects
Effects on Water and Aquatic Life	<p>The project is not expected to have any significant long term detrimental impacts on water quality or aquatic life.</p> <p>During construction there will be an increase in suspended solids resulting from coffer dam and other construction activities. These effects will be minimised by avoiding disturbance of soils during the clearing activities. Site drainage systems will include sedimentation basins to trap sediments in runoff prior to release to the river.</p> <p>Indigenous aquatic grasses will be planted to control erosion that might occur as a result of the fluctuating water levels during the initial operation period. In the long term the banks are expected to stabilize and no significant erosion is expected.</p> <p>Trees and shrubs will be harvested prior to the reservoir being filled, to minimise water quality effects associated with rotting vegetation, and to prevent fouling of fishing gears.</p> <p>It is expected that fish stocks will naturally increase in the reservoir compared to the existing condition. For Nile tilapia habitat enhancement will be carried out as part of the quarry and river bank restoration. Stocking is not expected to be needed.</p> <p>The abundance of “Haplochromines” fish are also expected to increase as a result of the conversion of faster-flowing habitats to the slower-flowing habitats that are preferred by these species</p> <p>Entrapment and entrainment of aquatic organisms is not expected to have a significant effect on fish or other populations. Fish screens will be installed on the water intakes reduce the rate of entrainment by fish. Access points will be provided to the river to ensure there is access to the river by local persons for washing, fishing or other purposes during the construction period.</p>
Air Quality and Greenhouse Gases	<p>The project will not involve significant emissions of pollutants to air. Dust will be generated during construction but is not expected to result in any significant offsite impacts. Industry good practice will be used to limit dust, including grassing stockpiles to prevent wind raised dust, using wetting agents on roads, and using covering loads of friable materials on trucks using public roads. Vehicles and motors will be regularly maintained to minimise exhaust emissions and black smoke.</p> <p>Bujagali will generate about 250 times less greenhouse gas emissions compared to generating the same amount of electricity from burning of fossil fuels.</p>
Noise	<p>Noise generated during construction is not expected to have any significant off-site nuisance effects. The main offsite noise will be short term noise related to blasting during quarrying. A notification procedure will be developed to ensure surrounding communities are informed about the procedures and timing of blasting.</p>

Project Issue	Summary of Mitigation and Net Effects
Access Roads and Traffic	An existing two-lane, paved, public highway provides access to the site. The existing roads are of sufficient capacity to accommodate project related traffic. A Traffic Management Plan (TMP) will address all aspects of project related traffic including speeding, maximum loads on trucks, abnormal loads; and, management of connection points between access roads and main public highways. Consultations are planned with community leaders to identify measure to ensure safety for pedestrians, including school children, that use the road as a walkway.
Environment Protection Areas	The project will result in disturbance and loss of land that falls within the Jinja Wildlife Sanctuary. Consultations with the management authority for the Sanctuary indicate that planned enhancement planting will offset the losses. The sponsor will assist in the further development of the Kalagala Falls and Nile Bank CFRs to help offset impacts on Bujagali Falls and Jinja Wildlife Sanctuary.
Tourism, White Water Rafting and Aesthetics	<p>The project will result in flooding of Bujagali Falls and associated rapids. Consultations with WWR operators indicate that the operators are generally well-advanced in their preparations to re-orient their operations downstream and expand operations beyond rafting. To facility the move BEL will provide new raft launching facilities downstream of the dam, the specific locations to be agreed upon with the operators. BEL is involved in ongoing consultations with the WWR operators as to how it can further offset the impacts on their activities, and support the relocation process.</p> <p>BEL will construct a visitor's centre at the HPP and a cultural centre near Bujagali Falls, and work with Jinja Tourism Development Association (JITDA) on sustainable tourism activities for the new reservoir recreationally.</p>
Effects on Cultural Property	<p>Dwelling sites of spirits important to the local community are being addressed through transfer and resettlement ceremonies. Ceremonies for the Bujagali Rapids have been carried out, although additional activities are being discussed with the Busoga Kingdom.</p> <p>The project will result in flooding of household graves and amasabo (shrines). Where possible these have been relocated as part of the resettlement programme or through compensation payments. Remembrance services to commemorate those buried in the area will be completed. A structure or monument may be erected, either at site of remembrance or elsewhere, in accordance with wishes expressed by local communities.</p>
Community Health, Safety and Security	BEL has developed public health related programs to combat spread of HIV/AIDS and other sexually transmitted diseases (STDs) and vector-borne diseases such as malaria amongst workers and the local communities. An emergency program is being developed specifying actions to be taken in the event of an outbreak of Ebola, or other highly infection disease. Improvements to health care in local communities is being addressed in the CDAP.

Project Issue	Summary of Mitigation and Net Effects
Dam Safety – Risk Assessment	<p>An independent Panel of Experts will be commissioned to review and advise BEL on matters relative to dam design and safety. The Bujagali Dam Safety Panel (BDSP) is expected to consist of three technical experts who will provide advice through final design, construction, initial filling, and start-up phases of the dam. The BDSP is also expected to examine the potential safety implications raised by NGOs regarding the upstream Nalubaale facility.</p>
Labour and Working Conditions	<p>The potential risks have been identified which have a regional prevalence and which have arisen from analysis of similar projects include:</p> <ul style="list-style-type: none"> <li>• Worker health and safety;</li> <li>• Forced labour and freedom of association;</li> <li>• Payment of minimum wage; and,</li> <li>• HIV impact.</li> </ul> <p>BEL is committed to implementing various processes, business commitments and measures to address the various labour risks identified and additional issues required in lender policies.</p> <p>The contract and terms of reference to be agreed between BEL and the EPC contractor (which will employ the majority of construction workers) will specify labour and occupational health and safety commitments to be observed by the contractor and sub-contractors, as well as responsibilities for monitoring the implementation of these commitments, which will lie primarily with the EPC contractor. BEL is committed to establishing its own procedures and reviewing the EPC contractor’s procedures, and assessing the performance of both parties on these issues, including ensuring that sub-contractors’ contracts commit them to compliance with relevant labour and health and safety legislation and guidelines.</p>
Associated Facilities	<p>A separate SEA has been completed for the Bujagali Interconnection Project (IP). That SEA addresses the following key issues:</p> <ul style="list-style-type: none"> <li>• Resettlement and Compensation for the projected affected persons;</li> <li>• Impacts on Central Forest Reserve Lands;</li> <li>• Impacts on Lubigi Swamp and other wetlands;</li> <li>• Impacts on public health, including HIV/AIDS and Electric and Magnetic Fields (EMFs);</li> <li>• Aesthetics;</li> <li>• Labour Force Management;</li> <li>• General construction related issues; and,</li> <li>• Cumulative effects</li> </ul> <p>That SEA has been prepared in parallel with the SEA for the HPP, and in line the HPP SEA included extensive stakeholder consultations.</p>

Project Issue	Summary of Mitigation and Net Effects
Other Construction Related Issues	<p>A number of construction-related issues were identified that are common to many large-scale construction projects, and for which potential effects are well-known and effective mitigation available. The issues identified are:</p> <ul style="list-style-type: none"> <li>• Public and Worker Health and Safety;</li> <li>• Management of Hazardous and Contaminating Material;</li> <li>• Management of Solid Waste;</li> <li>• Soils and Agriculture;</li> <li>• Air quality; and,</li> <li>• Archaeological Sites.</li> </ul> <p>The EPC Contractor will be responsible for measures to mitigate and manage the potential effects related to construction activities. These measures will be specified in the Contractor's plans, which will be incorporated into the SEAP.</p>
Other Operations Related Issues	<p>A number of operational-related issues were identified that are common to most large-scale hydro projects and for which the potential effects are well documented and effective management measures available. These issues identified are:</p> <ul style="list-style-type: none"> <li>• Public and worker health and safety;</li> <li>• Management of hazardous and contaminating material; and,</li> <li>• Management of solid waste.</li> </ul> <p>BEL, as operator of the facility, will be responsible for the implementation of measures to protect, mitigate, and manage the potential effects related to the operation of the hydropower facility. Project specific plans and programmes to be developed by BEL for the operations phase will be incorporated into the SEAP.</p>

## 7.4 Cumulative Effects

The potential cumulative effects of the Bujagali hydroelectric project have been evaluated in the context of other existing and proposed hydroelectric projects on the mainstem Victoria Nile in Uganda. The timeframe is on the order of 20 years, though conceptually, the timeframe extends to the end of the operational life of the projects under review, more on the order of 50 years, at least.

The projects assessed are Nalubaale (Owen Falls), Kiira (Owen Falls Extension), Bujagali, and Karuma. A Kalagala scheme is not included as the Kalagala offset agreed by the Government of Uganda to offset the residual impacts of the Bujagali project precludes such development there.

Overall, the significant and positive cumulative effects of Bujagali have been determined to include:

- Developmental benefits at the local, regional and national levels, including Economic benefits associated both with:
  - the project's construction (short term), and;
  - the operation of the project (medium and long term).
- Increased supply of electricity, including poverty alleviation benefits to the extent that the new electricity be accessible to those living with poverty;
- Compensation to people economically affected or physically relocated by the project; and,
- Employment and small business opportunities for Ugandans in the short, medium and long terms.

Project cumulative impacts of a negative nature are considered to be of minor significance. These include:

- Relocation of people with compensation to accommodate the project's construction, facilities and operations;
- Aesthetic impacts from the presence of another dam with the potential for knock-on tourism impacts (potentially positive, as well, however);
- Some disruption of the natural flow regime over an ~8-km stretch of the river Nile downstream of and as a result of Nalubaale and Kiira (see Section 7.5.3):
  - with associated impacts on aquatic organisms and communities (also potentially positive if productivity of reservoir increased);
  - and river users (fishers) – also potentially positive if increased productivity in reservoir is reflected in fishers' catches, and;
- Losses of wildlife populations and habitats, as well as agricultural lands, due to inundation of terrestrial habitats.

It is unknown, based on currently available data and information, whether cumulative effects on health and educational services or on cultural/spiritual sites might be identified. It seems unlikely that there are cumulative effects on white water rafting, as these activities are not believed to have been commercially available at the time of Kiira's approval. The cumulative effects of transmission system infrastructure associated with the Bujagali hydroelectric project are addressed in the companion SEA.

Other cumulative effects of the Bujagali HPP could include:

- Disruption of fish migrations in the river Nile in the vicinity of the project, given Nalubaale's impacts on fish movements between Lake Victoria and the river Nile since 1954;
- Insignificant changes in the levels of Lake Kyoga and in flows downstream of it (Section 7.5.3); and,
- Reduced operational need to increase flows through Nalubaale and Kiira due to efficiencies from Bujagali HPP (a positive cumulative effect, should it occur).

With respect to cumulative effects with other non-hydroelectric projects in the Ugandan energy sector, there could be a reduced need to dispatch thermal and emergency sources of electricity to the Ugandan grid and by individual consumers (generators) with cost savings, air emissions reductions, and likely human health benefits (another positive effect). Another such effect could be some reduced demand for other fuels (including firewood) where access to electricity is available and cost-competitive.

There are no changes (including cumulative effects) anticipated in the 'Agreed Curve' hydrological regime for the river Nile.

BEL intends to consult with key stakeholders in Uganda and elsewhere, as appropriate, on the preliminary conclusions reached in the cumulative effects analysis and report on the results and any associated mitigation or monitoring implications, as appropriate, in the SEAP update documentation to be released on a regular basis.

In addition, the final version of the Strategic/Sectoral, Social and Environmental Assessment of Power Development Options in the Nile Equatorial Lakes Region commissioned by the Nile Basin Initiative is expected to become available after the disclosure of this SEA report. The update of this cumulative effects analysis of preliminary conclusions will include any implications for this analysis from the final version of that report, as well as modifications resulting from consultations with key stakeholders.

## 8.0 Social and Environmental Action Plan

The SEA provides a framework for the Social and Environmental Action Plan (SEAP) that will be developed for the project. At the time the SEA was written, certain detailed planning and design activities relevant to the SEAP were still to be completed. Thus, the SEAP is described at the level of detail available at the time of writing. When the detailed activities are completed, they will be integrated within the framework of the SEAP and an update will be prepared and released by BEL. Currently, the SEAP framework addresses the following key components:

- Social and environmental management policies and systems;
- Mitigation plans, procedures, and programmes;
- Monitoring activities;
- Implementation schedules and cost estimates; and,
- Plans for integrating the SEAP within the overall development plan for the project.

### 8.1 Environmental Management

BEL is the project sponsor and will have overall responsibility for design and building of the hydropower facility. BEL will own and operate the hydropower facility for a 30 year period, after which time ownership will be transferred to the GoU. BEL is in the process of selecting a contracting consortium, which will construct the hydropower facility on an Engineer, Procure and Construct (EPC) basis.

As project sponsor, the ultimate responsibility for the project's compliance with Ugandan and international lender legislation and guidelines for environmental and social performance will lie with BEL. However, day-to-day responsibility for implementing environmental and social mitigation, compensation and monitoring actions will in many cases be devolved to the EPC Contractor or to third parties.

The SEAP addresses both the construction and operational phases of the hydropower facility for a 30 year period, until UEGCL, or its successor, assumes ownership and responsibility of the hydropower facility.

BEL is committed to the creation and implementation of programmes to reduce the probability of occurrence of deleterious environmental incidents. Contingency plans will be developed for dealing with such adverse incidents, if they occur.

BEL will expect the same level of environmental performance from its agents, suppliers, and sub-contractors and will stipulate this in any legally binding agreements it enters with these parties.



## **8.2 Relationship of the SEAP to Other Project Plans**

The SEAP is an umbrella plan that is comprised of several components that are to be integrated and implemented by BEL and the EPC Contractor with regard to the Bujagali Hydropower Facility. These components are shown in Figure ES-6.

While this SEA includes working versions of three of the Sponsor's Action Plans (namely the PCDP, the APRAP and the CDAP), those which are the responsibility of the EPC Contractor, and those of the sponsor not included herein will be developed after the EPC Contractor has been appointed at the appropriate level of detail for that stage of project development. The overall objective is to have final versions ready as needed for their implementation. Consultations and disclosure of the various plans will occur throughout the process of their development and implementation.

## **8.3 Implementation of the Social and Environmental Action Plan**

### **8.3.1 BEL's Commitments and Resourcing**

In order to discharge its commitments with respect to management of biophysical impacts of the project, BEL will designate a suitably qualified and experienced Environmental Manager.

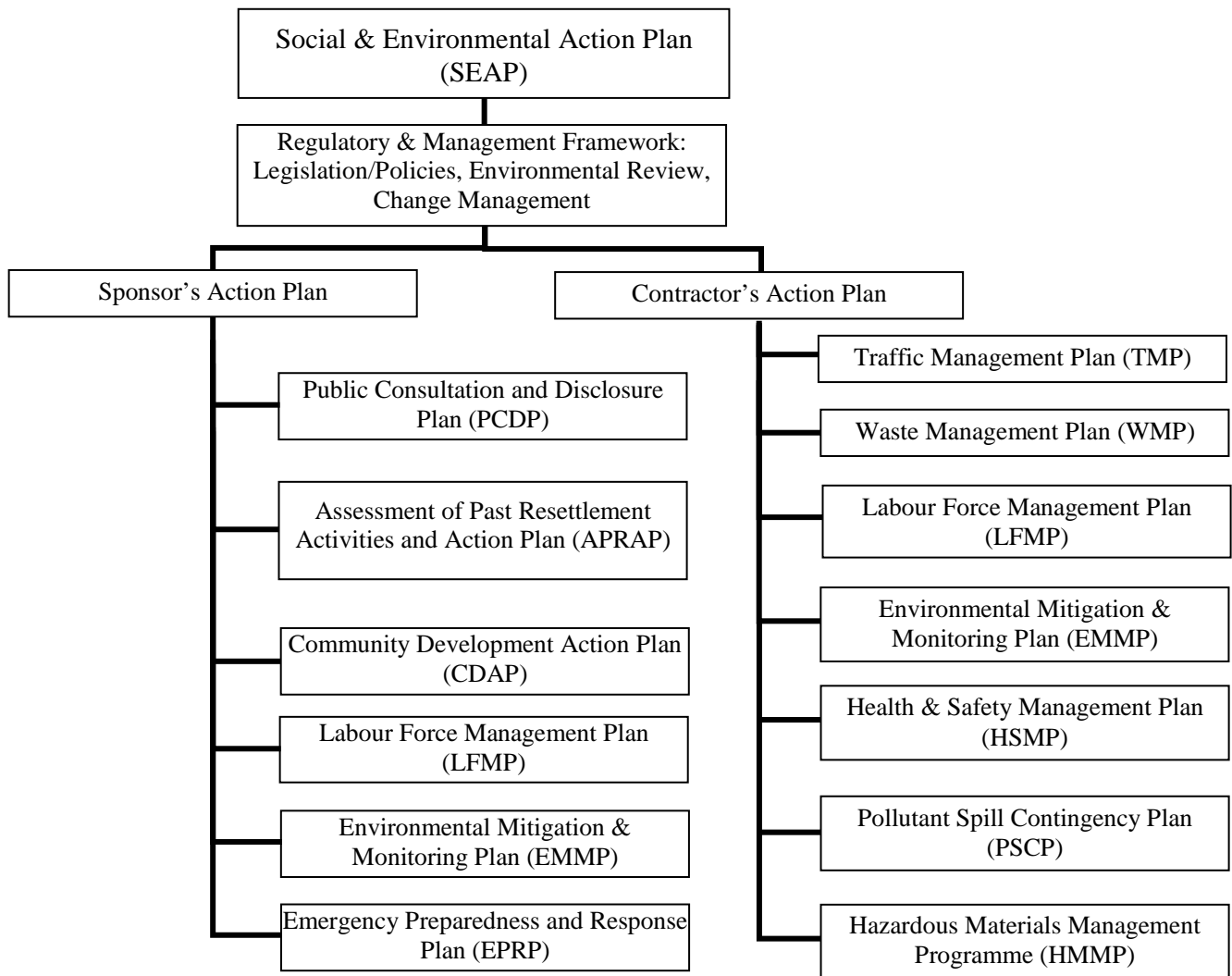
The Environmental Manager shall report directly to BEL's Implementation Manager, and will be provided with sufficient support staff and facilities to allow all of BEL's environmental commitments to be discharged appropriately. The Environmental Manager and his team will be members of the overall Implementation Team for the project.

### **8.3.2 EPC Contractor's Commitments and Resourcing**

The EPC Contractor will designate an appropriately experienced and qualified Site Environmental Officer (SEO), who will be responsible for implementation of the measures set out in the Contractor's EMMP.

The Environmental Field Inspectors will be appointed during the mobilisation phase, and will be local staff with relevant environmental/engineering experience, who are fluent in local languages. The number of field inspectors may be adjusted according to the environmental issues on-site.

The SEO will have overall responsibility for the activities of the Contractor's Environmental department. On a day-to-day basis the emphasis of his work will be upon liaison with BEL's Environmental Manager, and with relevant authorities, local residents and NGOs on environmental issues (i.e. external liaison). The responsibility for day-to-day management of the field team will be devolved to the Environmental



Project Name: <b>BUJAGALI HYDROPOWER PROJECT SEA</b>	Date: December, 2006	10045-H-ES-6	<b>Figure ES-6</b>
Prepared for: <b>BUJAGALI ENERGY LIMITED</b>	<b>SEAP COMPONENT PLANS</b>		

This page is left intentionally blank.

Field Co-ordinator. The field team will comprise Field Inspectors, supported by drivers and labourers. The Field Inspectors will maintain a permanent presence on-site, carrying out routine checks of operating procedures and environmental monitoring.

### **8.3.3 Reporting Lines and Decision-Making**

On a quarterly basis, the SEO will provide the Environmental Manager with a report containing monitoring results (and a summary of these), a synopsis of environmental issues encountered, and the efficacy of solutions to these issues. The Environmental Manager will use these as the basis for BEL's quarterly environmental reports. BEL's quarterly reports will also include commentary on the implementation and efficacy of environmental mitigation actions implemented by BEL.

The Environmental Manager will develop annual environmental reports suitable for submission to NEMA (as a requirement of the Ugandan Environmental Impact Assessment Regulations) and to other stakeholders as appropriate. This will provide an opportunity for NEMA and stakeholders to comment both on the impacts of the project itself and the efficacy of the SEAP. Where necessary, the SEAP will be updated.

### **8.3.4 Social and Environmental Auditing and Reporting**

Auditing of the environmental compliance of the project will be carried out at two levels: internal and external.

BEL will carry out annual internal audits of its compliance with the requirements of the SEAP, and any other environmental requirements, such as those imposed by NEMA and/or the international lenders. The responsibility for implementing these audits will lie with the Environmental Manager, who may elect to employ external consultants.

External audits of the EPC Contractor's environmental compliance will be carried by BEL, and potentially by representatives of NEMA and the international lenders.

### **8.3.5 Social and Environmental Oversight**

The project will have ongoing accountability to, and will be monitored by, both the lenders and NEMA (the latter via the District Environmental Officers for Jinja and Mukono). However, in order to ensure that issues are identified early, and resolved in an equitable fashion, BEL undertakes to support independent oversight of the project at several levels, as follows:

#### *Social and Environmental Panel of Experts*

It is a requirement of lender policies that the Project Sponsor engages a Social and Environmental Panel of Experts (PoE), to provide ongoing oversight of compliance with the relevant Safeguard Policies and Performance Standards. BEL is in the process of engaging the PoE for the Bujagali project.

#### *Dam Safety Review Panel*

Under World Bank Group policies, BEL is required to assemble a Dam Safety Review Panel (DSRP) acceptable to the World Bank Group. At financial close, BEL will develop a Terms of Reference and assemble a 3-member DSRP, the main functions of which will be to review and advise BEL on dam safety matters and other critical aspects of the dam, its structures, catchment area, reservoir surroundings and downstream areas. BEL may request the panel to provide expert review of associated issues such as the safety of the power generation facilities, river diversions during construction, the implications on safety of the upstream dams – Nalubaale and Kiira, and potential effects of a failure at either of these facilities on the Bujagali Dam.

#### *Environmental Monitoring Committee*

At the time of writing, an EU country was considering supporting an independent Environmental Monitoring Committee which would provide social and environmental oversight of the Bujagali HPP as part of its bilateral aid to Uganda. This Committee would support NEMA and would be independent of the sponsor group. Thus, the implementation of this Committee, if it eventuates, would be the responsibility of GoU.

### **8.3.6 Change Management**

During the implementation of the project, change may be required to address unforeseen or unexpected conditions or situations. A change management process will be applied to ensure environmental and social issues are addressed as part of any significant changes to project procedures, processes, design or activities. Both BEL and the EPC Contractor will be responsible for managing changes within their respective areas of responsibility.

### **8.4 Responsibilities and Costs for Environmental Mitigation Measures**

Table ES-4 below outlines the overall package of environmental mitigation measures that will be implemented in relation to the Bujagali hydropower facility. The table also assigns general responsibilities for implementing each group of mitigation measures. A detailed implementation schedule will be developed once the EPC Contractor is selected, and it will be submitted as an SEA update.

Consistent with the Bujagali Project's contracting strategy of integrating environmental protection and mitigation activities into the EPC Contractor's Scope of

Work, the specifications for many of the activities were included in the bid package upon which the EPC Contractor is developing its base rates. Therefore, since many of the costs associated with environmental protection and mitigation activities are included in the EPC Contractor's base rates, it is not possible to present a detailed accounting of all the monies devoted to the project's construction phase environmental protection and mitigation activities. These costs are therefore described as 'Within EPC contract price' in the table.

**Table ES-4: Responsibilities, Timing and Budgets for Social and Environmental Actions**

Issue	Action/s	Timing	Responsibility	Estimated Cost (USD)
Staffing for SEAP Implementation	Recruit SEAP Implementation Team	Months 1-3 after Financial Close	BEL - Implementation Manager	1,125,000
Social and Environmental Oversight – International Lenders	Appoint S&E Panel of Experts	Prior to Financial Close	BEL - Implementation Manager	300,000
Dam Safety	Appoint DSRP	Prior to Financial Close	BEL - Implementation Manager	450,000
Resettlement Corrective Actions	Implement APRAP	Year 1 after Financial Close	BEL – Social Unit	497,000
Community Development	Implement CDAP	Throughout Construction Phase	BEL - Social Unit	3,817,000
Public Consultation/Community Liaison	Implement PCDP	Throughout Construction Phase	BEL - Community Liaison Manager	Included in salary for SEAP implementation team
Labour Force Management	Develop Sponsor's LFMP	Months 1-3 after Financial Close	BEL – H&S/HR Managers	20,000
Labour Force Management	Develop EPC Contractor's LFMP	Months 1-3 after appointment	EPC Contractor	Within EPC contract price
Mitigation of biophysical impacts – not construction-related	Implement Sponsor's EMMP	Preconstruction	BEL (Environmental Manager)	321,000
		Construction Phase	BEL (Environmental Manager)	1,476,200
		Operations Phase (first 2 years)	BEL (Environmental Manager)	361,880
Mitigation of biophysical impacts –construction-related	Implement Contractor's EMMP	Throughout Construction Phase	EPC Contractor (SEO)	Within EPC contract price

Issue	Action/s	Timing	Responsibility	Estimated Cost (USD)
Institutional Strengthening (Plant and Environmental Management within UEGCL)	Assess need prior to handover to UEGCL.	Years 29 and 30 of BEL's concession.	BEL	TBD (funded from Bujagali HPP operating budget)

### 8.5 Responsibilities for Environmental Monitoring Measures

The SEAP describes the overall package of environmental monitoring that will be carried out in relation to the Bujagali hydropower facility. The EMMP also assigns responsibilities for each monitoring activity, and proposes parties who are capable of carrying out the monitoring, on behalf of the responsible body.

It should be noted that, consistent with the strategy of integrating social and environmental protection and mitigation activities into the EPC Contractor's Scope of Work, the specifications for many of the construction-related monitoring activities were included in the bid package upon which the EPC Contractor is developing its base rates. Therefore it is not possible to present a detailed accounting of all the monies devoted to the project's environmental monitoring activities during the construction phase.

### 8.6 Institutional Strengthening

Several governmental agencies at both the local and national levels will be responsible for ongoing monitoring of construction and operational conditions and activities. In general, BEL will consult with the applicable agencies to establish the extent of each agency's 'in house' capability for managing such activities, and identify any shortfalls.

Preliminary information about the institutional strengthening needs of the key government agencies involved, based on preliminary consultations during the SEA process, is provided in the SEA documentation.